

---

# **CROP DIVIDER**

---

# **INSTALLATION MANUAL**

---

## **STANDARD CROP DIVIDER ASSEMBLY**

---

### **FREEFORM PLASTICS**

BOX 159, ST. BRIEUX, SK CANADA

S0K 3V0

P: 1-306-275-2155

F: 1-306-275-2101

EMAIL: SALES@FREEFORMPLASTICS.COM

WEB SITE: WWW.FREEFORMPLASTICS.COM

## NOTES

- LOCTITE ALL FASTENERS THAT ARE NOT SELF LOCKING
- ONLY RIGHT SIDE SHOWN

## TOOLS REQUIRED

- RED LOCTITE
- 1/2" WRENCH AND SOCKET
- 9/16" WRENCH AND SOCKET
- 3/4" WRENCH AND SOCKET

## NOTES

1. THE ARM SHOULD BE ABLE TO LIFT BY HAND AFTER ASSEMBLY. IF IT CAN NOT LIFT BY HAND, FASTENERS ARE TOO TIGHT.

## INSTALLATION INSTRUCTIONS

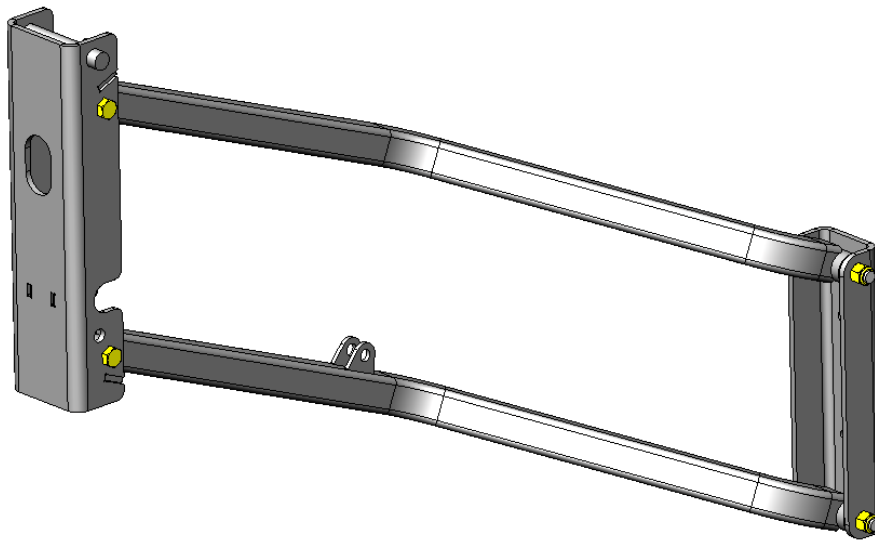
### 1. PARALLEL ARM ASSEMBLY

- FASTEN THE QUICK CONNECT WELDMENT TO THE UPPER AND LOWER ARM WELDMENTS USING THE FOLLOWING FASTENERS:

○ 1007-45	BOLT 1\2X5 UNC GR5 PLD	QTY 2
○ 1204-10	LKNT NYL 1\2 UNC PLD	QTY 2

- FASTEN THE CONE DIVIDER BRACKET TO THE UPPER AND LOWER ARM WELDMENTS USING THE FOLLOWING FASTENERS:

○ 1007-39	BOLT 1\2X4 UNC GR5 PLD	QTY 2
○ 1204-10	LKNT NYL 1\2 UNC PLD	QTY 2



## 2. LINKAGE ASSEMBLY

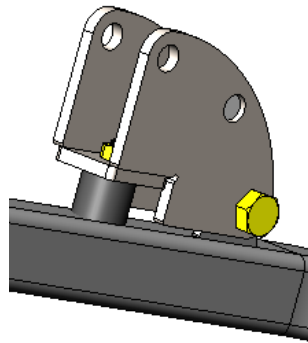
- FASTEN THE RUBBER STOPPER TO THE ACTUATOR LINKAGE USING THE FOLLOWING FASTENERS AND LOCTITE:

- 1201-10 NUT 5\16 UNC PLD QTY 1

- FASTEN THE ACTUATOR LINKAGE TO THE PARALLEL ARM ASSEMBLY USING THE FOLLOWING FASTENERS:

- 1007-18 BOLT 1\2X2-1\2 UNC GR8 PLD QTY 1

- 1204-10 LKNT NYL 1\2 UNC PLD QTY 1



## 3. ADJUSTMENT PLATE ASSEMBLY

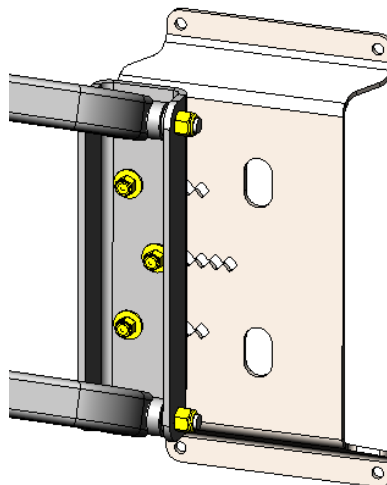
- FASTEN THE ADJUSTMENT PLATE TO THE PARALLEL ARM ASSEMBLY AS PICTURED BELOW USING THE FOLLOWING FASTENERS:

- 1102-09 BOLT CRG 3\8X1 UNC GR5 PLD QTY 3

- 1202-05 LKNT NYL 3\8 UNC PLD QTY 3

- 1326-15 WSHR 3\8 SAE ZN QTY 3

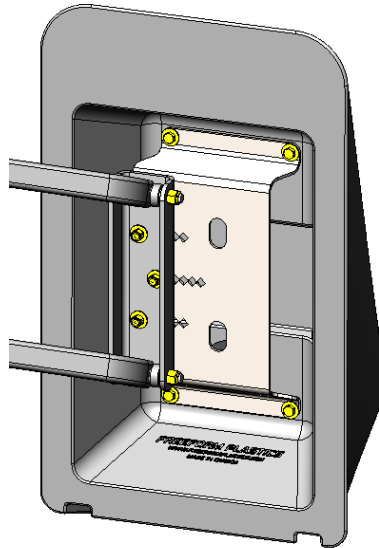
- THIS PLATE WILL OFFSET THE NOSE CONE OVER THE WHEEL, LATER ADJUSTMENT MAY BE NEEDED ONCE INSTALLED ON SPRAYER.



#### 4. CROP DIVIDER NOSE CONE ASSEMBLY

- FASTEN THE NOSE CONE TO THE ADJUSTMENT PLATE AS PICTURED BELOW USING THE FOLLOWING FASTENERS AND LOCTITE:

○ 1004-08	BOLT 3\8X7\8 UNC GR8 PLD	QTY 4
○ 1326-15	WSHR 3\8 SAE ZN	QTY 4



- #### 5. EXTRA FASTENERS WILL BE USED TO JOIN THE STANDARD CROP DIVIDER ASSEMBLY WITH THE SPRAYER MOUNTS AS WELL AS THE ELECTRIC OR MANUAL HEIGHT ADJUSTMENT KIT.

- FASTENERS TO JOIN ASSEMBLY TO THE SPRAYER MOUNTS:
  - 1007-51 BOLT 1\2X6 UNC GR5 PLD QTY 1
  - 1204-10 LKNT NYL 1\2 UNC PLD QTY 1
- FASTENERS TO JOIN ASSEMBLY TO THE HEIGHT ADJUSTMENT KITS:
  - 1007-18 BOLT 1\2X2-1\2 UNC GR8 PLD QTY 1
  - 1204-10 LKNT NYL 1\2 UNC PLD QTY 1

#### 6. REPEAT FOR LEFT SIDE ASSEMBLY

