



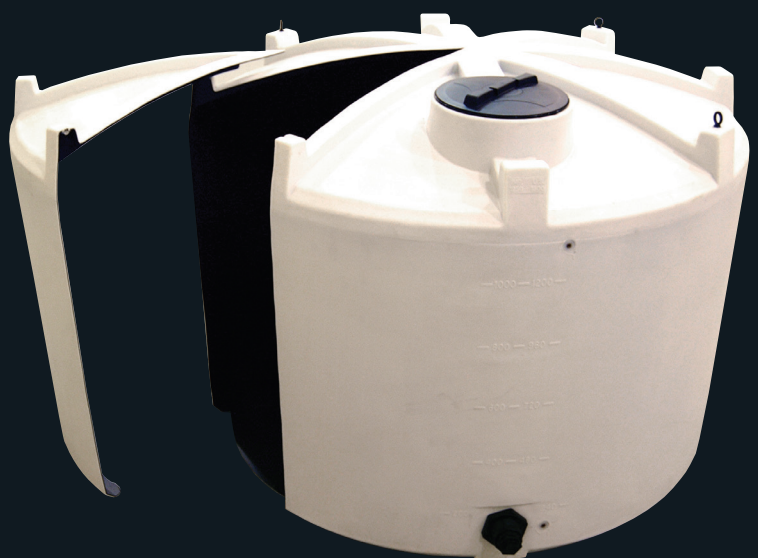
Vertical, Cone Bottom &
Low Profile tanks available in:



Algae growth and contamination have always been problems with water transport tanks. Black tanks have typically been used to overcome this problem, but because of the heat absorption of black the inherent strength of the tank is compromised making it difficult to securely fasten the tank for transport.

The design staff at Free Form Plastics have developed an innovative tank which eliminates algae growth without sacrificing the tank's structural integrity. On the outside it appears to be a standard white tank, but the inside is black to block UV rays.

- ▶ Gen2 tanks are available in the following sizes: 1150, 1250, 1350, 1400, 1500, 1750, 1950, 2000, 2500, 2650, 3250 imp. Gallon (1380, 1500, 1620, 1680, 1800, 2100, 2340, 2400, 3000, 3180, 3900 U.S. gallon).
- ▶ All Gen2 tanks have > UV20 protection to prevent deterioration from sunlight.
- ▶ Sight tube kits available to allow product visibility.
- ▶ Locations for sight tube kits are pre-installed. All Gen2 tanks are equipped with 4 load/unload hooks.
- ▶ Gen2 tanks are only available in the HD version which carries a (5) five year warranty against defects in workmanship. All HD tanks are rated for liquids up to 20 lb per gallon for liquid fertilizers, etc.
- ▶ Gen2 is available in flat, cone or low profile versions.



Freeform Plastics: St. Brieux, Saskatchewan, Canada, S0K 3V0

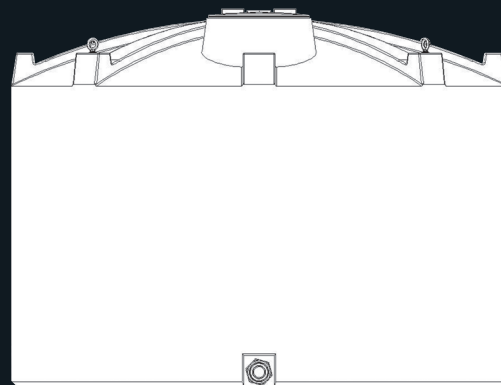
P: (306) 275-2155 F: (306) 275-2101

E: sales@freeformplastics.com freeformplastics.com

Gen2 Patents: US 7,118,700 & CDN 2,431,215

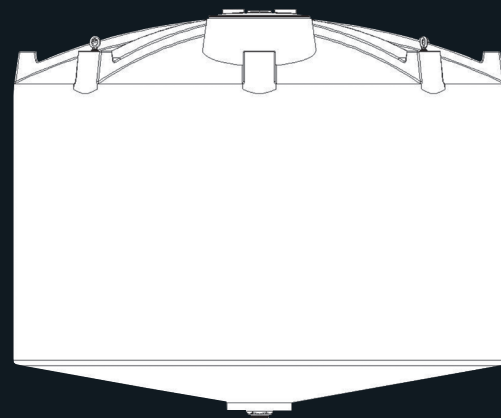
VERTICAL FLAT BOTTOM SPECIFICATIONS

CAPACITY		SPECIFICATIONS				PART NUMBER	
	U.S. GAL.	DIA.	HIGH	LID SIZE	STANDARD FITTING	TANK VERSION	GEN2 PART #
2500	3000	102"	93"	16"	3" HD	HD	1798
2000	2400	102"	78"	16"	3" HD	HD	1796
1750	2100	92"	88"	16"	3" HD	HD	1781
1500	1800	102"	60"	16"	3" HD	HD	1794
1400	1680	88"	74"	16"	3" HD	HD	1576
1250	1500	88"	68"	16"	3" HD	HD	1556



VERTICAL CONE BOTTOM (10°SLOPE) SPECIFICATIONS

CAPACITY		SPECIFICATIONS				PART NUMBER	
	U.S. GAL.	DIA.	HIGH	LID SIZE	STANDARD FITTING	TANK VERSION	GEN2 PART #
2500	3000	102"	95"	16"	3" HD	HD	1792
2000	2400	102"	80"	16"	3" HD	HD	1790
1500	1800	102"	62"	16"	3" HD	HD	1788
1400	1680	88"	76"	16"	3" HD	HD	1612
1250	1500	88"	70"	16"	3" HD	HD	1702



LOW PROFILE TANKS SPECIFICATIONS

CAPACITY		SPECIFICATIONS				PART NUMBER	
	U.S. GAL.	WIDTH	HIGH	LENGTH	LID SIZE	TANK VERSION	GEN2 PART #
3250	3900	90"	74"	191"	21"	HD Modular	2725
2650	3180	92"	78"	144"	16"	HD 1 Piece	3012
1950	2340	92"	62"	145"	16"	HD 1 Piece	2304
1350	1620	78"	53"	144"	21"	HD 1 Piece	2139
1150	1380	88"	29"	144"	21"	HD 1 Piece	26000-54

